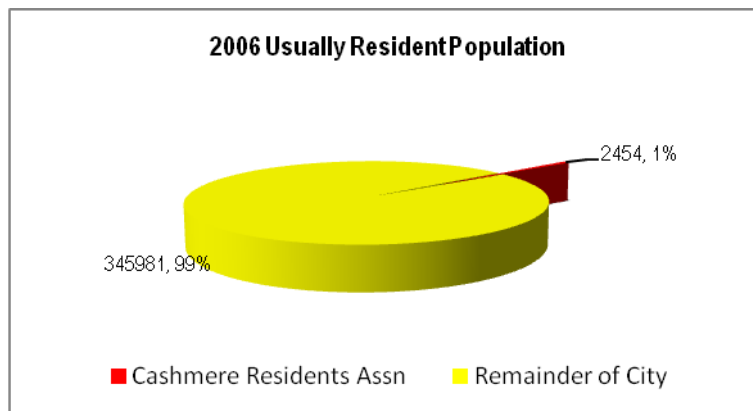


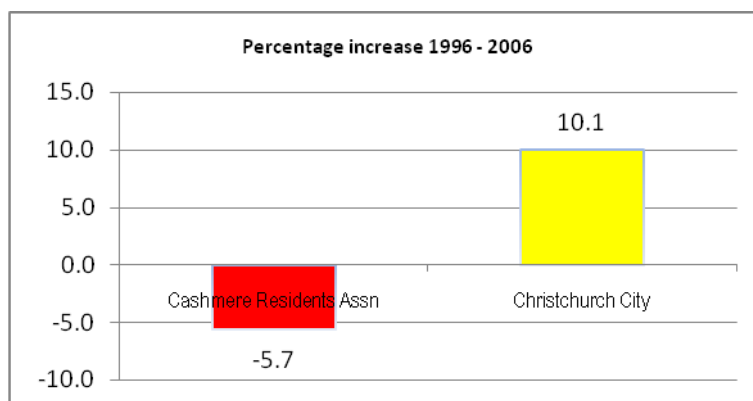
The People

At the time of the 2006 Population Census, Cashmere community was home to 2454 people



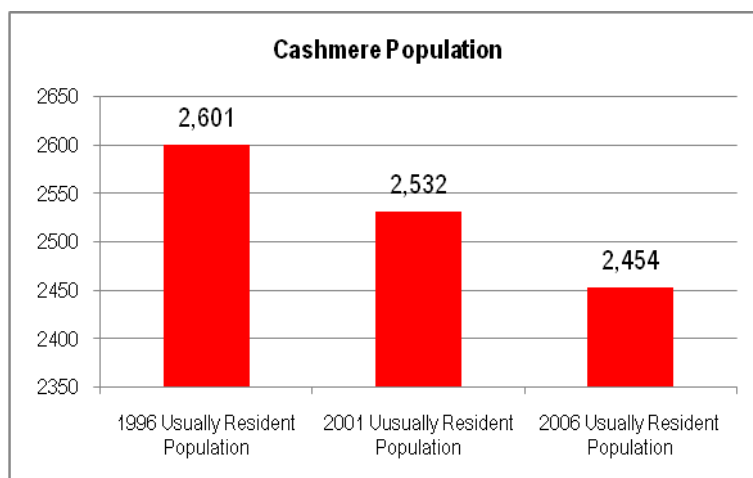
Source: Census of Population and Dwellings, 2006

In 2006 Cashmere residents made up less than 1% of the city's total population.



Source: Census of Population and Dwellings, 2006

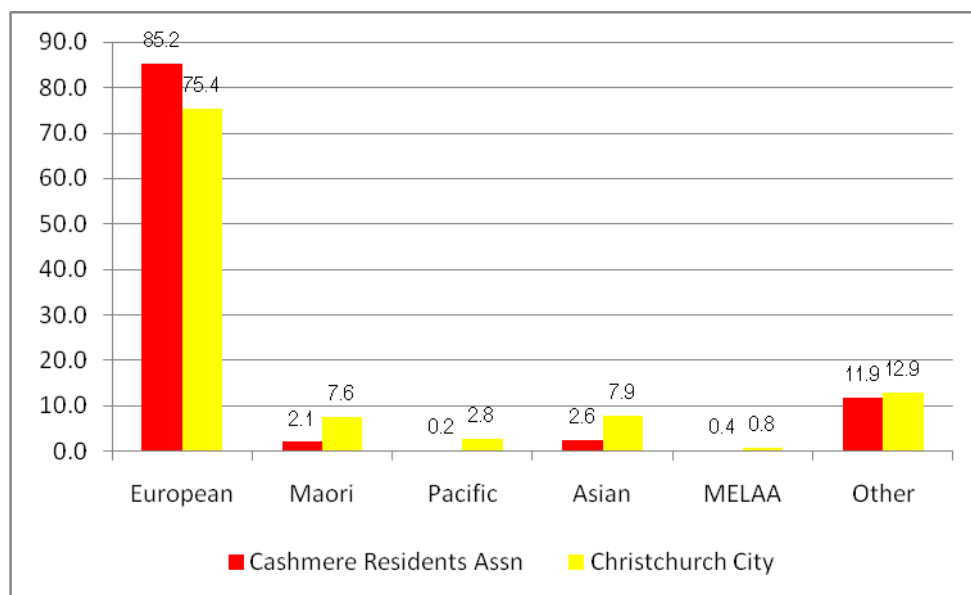
Between 1996 Cashmere had a - 5.7% increase on the 2001 usually-resident total compared with the 10 % increase across Christchurch as a whole.



Source: Census of Population and Dwellings, 2006

Ethnic diversity

Cashmere is less ethnically diverse than Christchurch as a whole.¹



Source: Census of Population and Dwellings, 2006
 MELAA = Middle Eastern/Latin American/African

- At the 2006 Census, more than 85% of the community's population identified as "European" – a considerably larger proportion than the 75% citywide.
- The 'Other Ethnicity' category includes groups previously classified as 'Other Other', as well as a separate category for 'New Zealander'².
- Maori³ were under-represented in Cashmere, with just 2.1% of the population identifying as Maori at the 2006 Census compared with 7.6% across Christchurch.⁴
- Other ethnic groups were also substantially under-represented. Just over 2.5% of the community's population identified as an Asian ethnic group (compared with 7.9% citywide), and less than 1% of the community's residents identified as a Pacific ethnic group (2.8% citywide).

¹ Ethnicity is the ethnic group or groups that people identify with or feel they belong to. Thus, ethnicity is self-perceived and people can belong to more than one ethnic group. Ethnicity is a measure of cultural affiliation, as opposed to race, ancestry, nationality or citizenship. An ethnic group is a social group whose members have the following four characteristics:

- share a sense of common origins;
- claim a common and distinctive history and destiny;
- possess one or more dimensions of collective cultural individuality;
- feel a sense of unique collective solidarity. *Statistics New Zealand, Concepts & Definitions.*

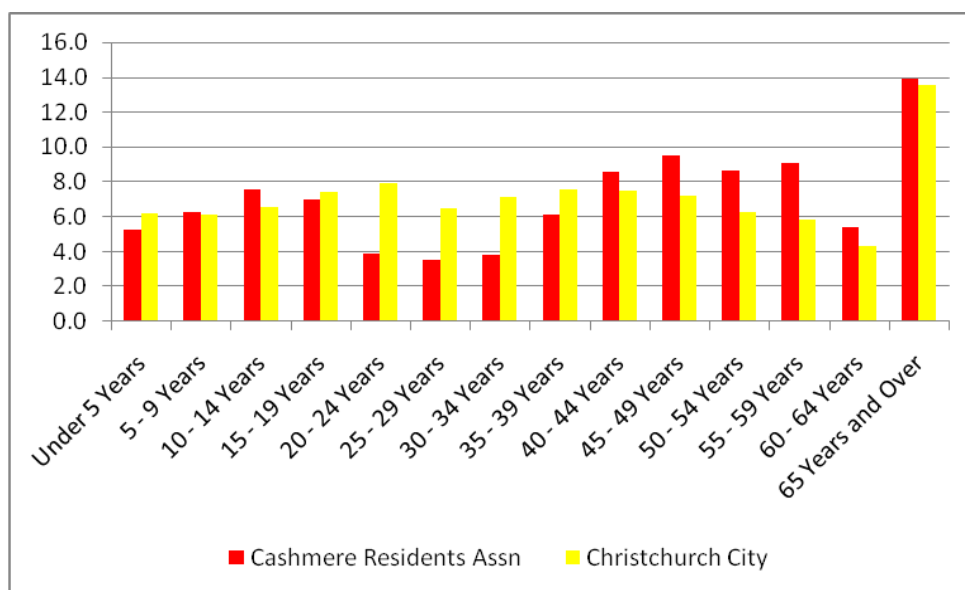
² A New Zealander response and like responses such as 'Kiwi' or 'NZer' are coded (by Statistics NZ) to a separate category, 'New Zealander', at level four in the Other Ethnicity group.

³ Maori ethnic group population People who identify with the Maori ethnicity with or without other ethnicities. Because ethnicity is self-perceived, people can identify with Maori ethnicity even though they may not be descended from Maori ancestors. Conversely, people may choose to not identify with Maori ethnicity even though they are descended from Maori ancestors. *Statistics New Zealand, Concepts & Definitions.*

⁴ Percentages total more than 100 because an individual can identify with more than one ethnic group and all are counted.

Age groups

The age distribution of Cashmere's population differs from the city as a whole.



Source: Census of Population and Dwellings, 2006

At the 2006 Census,

- Children under the age of 15 years made up 19% of the community's residents (19.5% citywide and 22% nationwide).
- Young adults aged 15-29 years were under-represented in Cashmere, accounting for 16% of residents compared with 24.5% citywide and 20% nationally.
- Those aged 30-44 were under-represented 21% in Cashmere compared with 22.5% citywide (22% nationally)
- Those 45-59 years made up larger proportions than their counterparts citywide and nationwide (16% and 19% respectively)
- Residents aged 60 years and older were slightly over-represented.

	Under 15 years	15 to 29 years	30 to 44 years	45- 60 years	60 years and over
Cashmere	19.0	16.3	20.8	22.8	19.9
Christchurch City	19.4	24.6	22.5	16.1	17.4